

## Security Questions

Matthew McGowan - 2024-05-19 - General

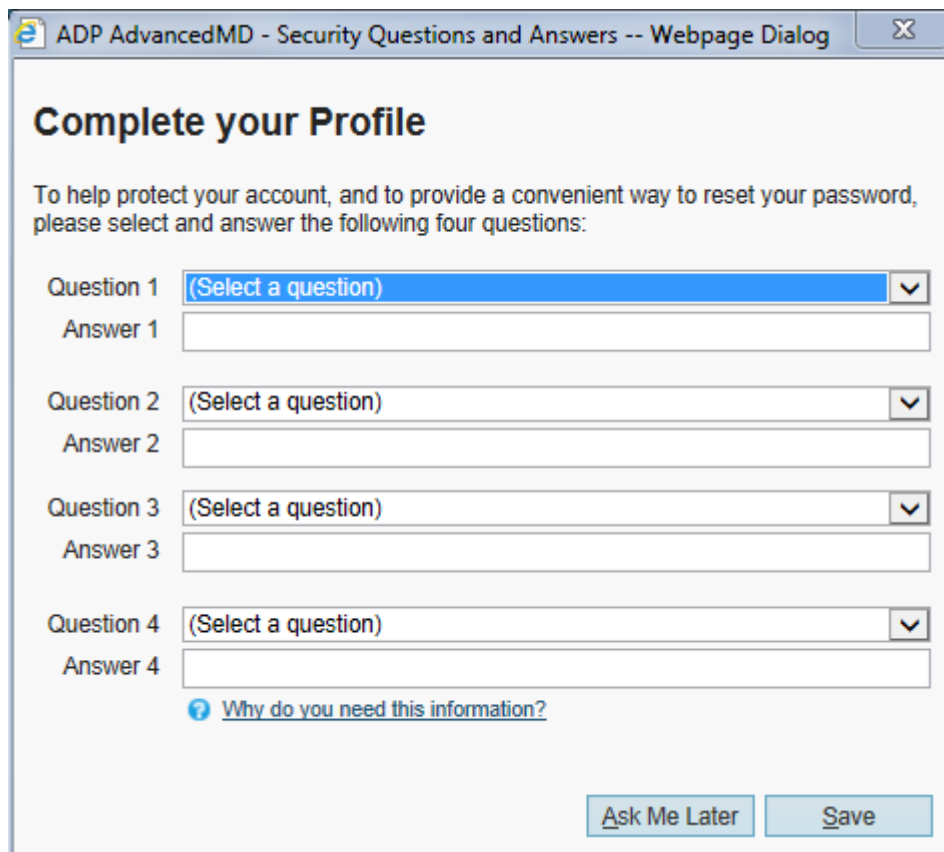
### User Profile

#### Security Questions and Answers

Another step has been added in our effort to help protect your account and to provide a more convenient way to reset your password. In the future, if you need to reset your password, you will be prompted to answer two questions you have set up in advance.

#### Setting up Security Questions and Answers

A new dialog will appear when you log in to the application prompting you to select and answer four security questions that will be used when resetting your password.



The screenshot shows a web browser window titled "ADP AdvancedMD - Security Questions and Answers -- Webpage Dialog". The main heading is "Complete your Profile". Below this, a message states: "To help protect your account, and to provide a convenient way to reset your password, please select and answer the following four questions:". There are four question sets, each with a dropdown menu for the question and a text input field for the answer. The first question's dropdown is highlighted in blue. At the bottom, there is a link with a question mark icon that says "Why do you need this information?". Two buttons, "Ask Me Later" and "Save", are located at the bottom right.

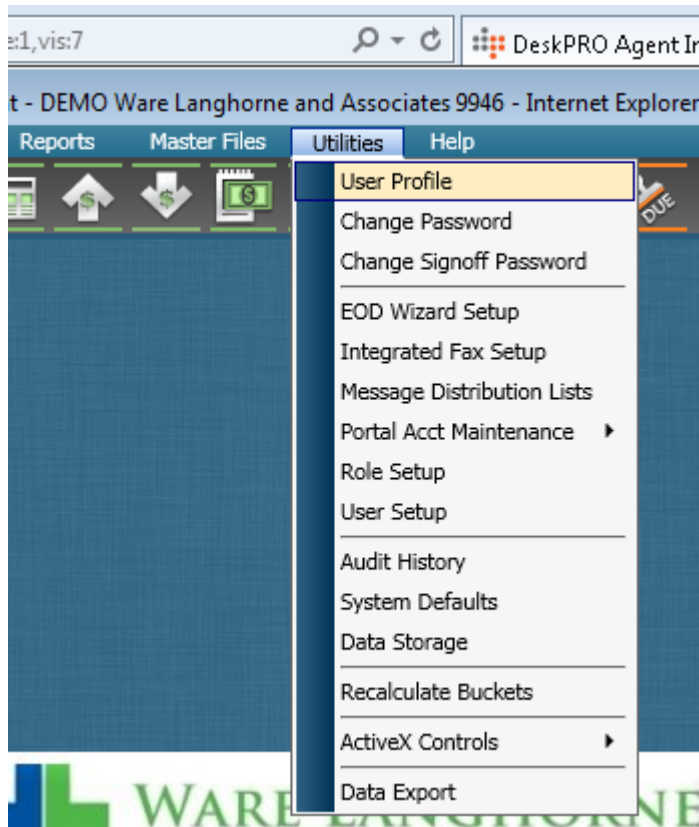
1. Select **Question 1**.
2. Enter your answer to question 1.
3. Repeat for questions and answers 2-4.
4. Click **Save**.

If you don't want to answer the questions now, you can click **Ask Me Later**. The dialog will appear again in seven days.

If you want to set the questions and answers before the dialog appears again, you can go to **Utilities | User Profile** and click the **Set Questions** link.

## User Profile Screen Updates

Along with the new security questions, changes have been made to the **User Profile** screen. A new section, **Security Questions**, has been added to the **User Profile** dialog to allow you to set or update your questions or answers.



Go to **Utilities | User Profile**.

**User Profile -- Webpage Dialog**

**User Name**

Login: KARRIE

Full Name: KARRIE

**Contact Info**

Home: (801) 555-6547

Work: (801) 555-9547 x

Other: (801) 555-3698 CELL

Email: KARRIE@USER.COM

[Change Email](#) [Confirm Email](#)

**Security Questions**

Your security questions are set. [Update Questions](#)

**Collection Letter Information**

Alias

Availability

[Change Password](#) [OK](#) [Cancel](#)

If you have not yet set your security questions, the new **Security Questions** section contains a reminder that you have not yet set the questions and indicates when the **Security Questions and Answers** dialog will appear again at login. The section also contains a link to click to set the security questions and answers.



## User Profile

The **User Profile** screen allows each user to enter and save personal information, create an alias, and change the password. This screen can be used to create an alias and availability information that will appear instead of your name on collection letters generated by you through the **Collections** module. The **Work** phone, **Alias** and **Availability** are available as merge fields that can be added to **Collection** type **Form Templates**.

**User Profile -- Webpage Dialog**

**User Name**  
 Login: KARRIE  
 Full Name: KARRIE

**Security Questions**  
 Your security questions are set. [Update Questions](#)

**Contact Info**  
 Home: (801) 555-6547  
 Work: (801) 555-9547 x   
 Other: (801) 555-3698 CELL   
 Email: KARRIE@USER.COM  
[Change Email](#) [Confirm Email](#)

**Collection Letter Information**  
 Alias:   
 Availability:

[Change Password](#) [OK](#) [Cancel](#)

Go to **Utilities | User Profile**. The user currently logged in will be displayed.

1. Enter telephone information. This is optional.
2. Enter the user's **Alias**, if applicable. This is the name that will appear instead of your own name on collection letters that are generated by you through the **Collections** module.
3. Enter a textual description of the user's **Availability**, if applicable. This can be up to 255 characters, and is also optional.
4. If you want to change your password, click **Change Password**.
5. Click **OK**.

#### Change Password

If you want to change your password, click the **Change Password** button.

1. Enter your old password.
2. Enter and confirm your new password.
3. Click **OK**.

#### Confirm Email

When you enter and confirm your email address when prompted at login, a dialog appears asking you to confirm your email address by entering the confirmation code sent to the email address you entered. If you click the **Confirm Later** button, you can enter the confirmation code at a convenient time by clicking the **Confirm Email** link in the **User Profile** screen.

#### Change Email

You can change your email address by clicking the **Change Email** button. You will be

prompted to enter a confirmation code that will be sent to your new email address.

1. Click **Change Email**.
2. Enter the confirmation code sent to your new email address.
3. Click **Confirm**.